

# PASS-THRU REFRIGERATORS

## Top Mounted Condensing Unit

ES - Series • ESPT-1S-1S • ESPT-2S-2S • ESPT-1G-1S • ESPT-2G-2S



▲ ESPT-1S-1S



▲ ESPT-1G-1S



▲ ESPT-2S-2S



▲ ESPT-2G-2S

### Cabinet Construction

- Pass Thru design allows seamless access from both front and back entry points.
- Open spaced interior with no walls between compartments.
- Heavy duty stainless steel interior / exterior with rounded corners for a hazard-free workspace.
- Galvanized steel top and bottom.
- 2.5" thick high density polyurethane insulation.
- Four 5" swivel casters with locks on front set.

### Refrigeration System

- Top mounted, self-contained and fully detachable Blizzard R290 condensing unit uses environmentally friendly, EPA-compliant R290 refrigerant with zero (0) Ozone Depletion Potential (ODP) and three (3) Global Warming Potential (GWP). Blizzard R290 is easily replaceable and requires no on-site brazing.
- Electronically commutated (ECM) fan motors achieve rapid cooling with less energy consumption.
- Full-length air duct system and airflow guard ensure optimal circulation of cold air.
- Time-initiated and temperature-terminated auto defrost cycle for seamless operation.
- Large capacity, corrosion-resistant condenser and evaporator coils.
- Self-maintaining, energy-efficient condensate drain pan requires no external drains or electric heaters.
- High performance, auto-reverse condenser fan motor supports compressor ventilation and condenser coil cleaning. Refer to owner's manual for full maintenance instructions.
- Pressure relief devices allow smooth access to cabinet interior when re-opening doors.
- Pre-wired and ready to plug, 115V/60Hz/1Ph, NEMA 5-15P.

### Lighting

- Energy efficient silicone coated and shatter-proof LED lighting provides bright, high color illumination with low heat output for models, ESPT-1S-1S and ESPT-2S-2S.
- Shielded LED bar lighting with on/off switch provides bright, high color illumination at lower heat output for models, ESPT-1G-1S and ESPT-2G-2S.

### Doors

- Solid or glass front and rear doors. Solid doors have stainless steel exterior/interior and 2.5" thick, high-density polyurethane insulation. Glass doors have low emissivity double glass panes that reflect UV rays for efficient cooling.
- Frame heaters prevent exterior moisture build up.
- Self-closing with adjustable torsion system for a positive seal.
- Snap-in magnetic door gasket make cleaning and replacement an easy process.
- High strength, recessed door handles.
- Pre-installed door locks keep your items safe from theft.
- Field reversible.

### Shelving

- Three epoxy coated, steel wire shelves per section.
- Height adjustable stainless steel clips.

### Temperature Control

- Multi-function digital controller with easy to read LED display.
- Factory preset temperature, 35°F. Temperature setting range from 33°F to 54°F.
- Audible overheat protection alarm for compressor and condenser coil.

### Options

- 3.5" – 6" height-adjustable and interchangeable legs.
- 3" swivel casters with locks.
- Additional shelving.



## Dimensions

↔ = Interior Dimensions      ↔ = Exterior Dimensions

### ABS Legs

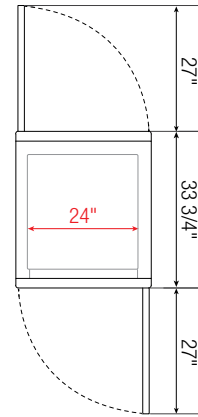
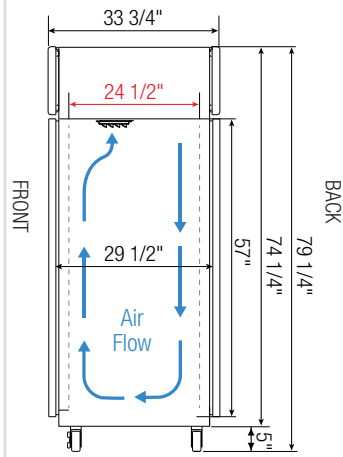


Adjustable stainless steel clad ABS legs for all models to provide extra stability when opening and closing doors and for weight support.

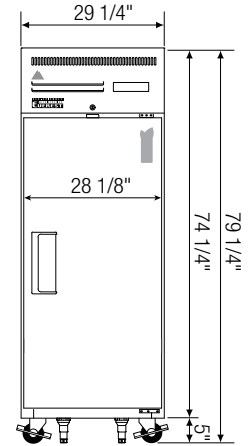


Equipped with 9 ft long NEMA 5-15P plug.

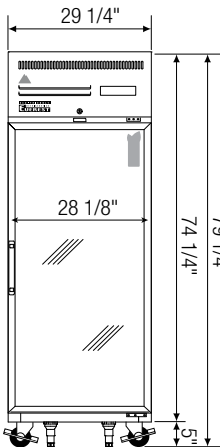
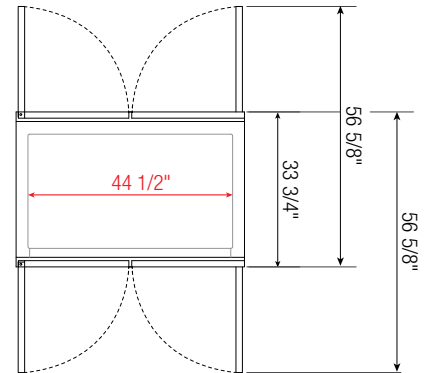
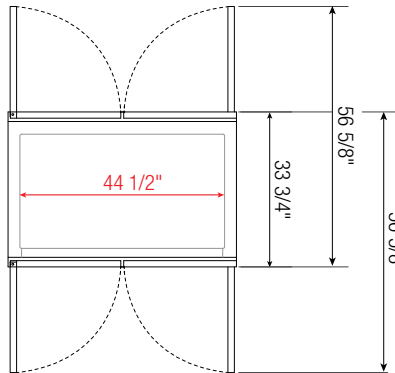
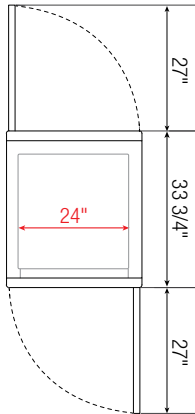
### Side View



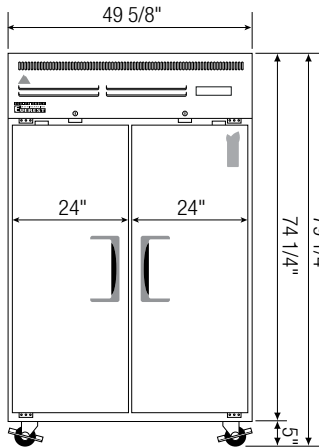
▲ ESPT-1S-1S



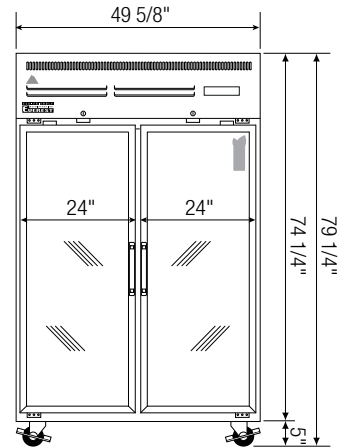
▲ ESPT-1S-1S



▲ ESPT-1G-1S



▲ ESPT-2S-2S



▲ ESPT-2G-2S

Model	Ref/ Frz/ Dual	# of Doors	Capacity (Cu. Ft.)	HP	BTU/HR <sup>†</sup>	Refrigerant	# of Shelves	Power (V-Hz-Ph)	Amps	Crated Weight (LBS)	Exterior Dimensions (Inches)		
											L	D	H*
ESPT-1S-1S	Ref	2	23.43	1/4+	1,926	R290	3	115-60-1	4.12A	324	29 1/4	33 3/4	74 1/4
ESPT-1G-1S	Ref	2	23.43	1/4+	1,926	R290	4	115-60-1	3.84A	364	29 1/4	33 3/4	74 1/4
ESPT-2S-2S	Ref	4	43.4	1/3	2,311	R290	6	115-60-1	4.12A	452	49 5/8	33 3/4	74 1/4
ESPT-2G-2S	Ref	4	43.4	1/3+	2,938	R290	8	115-60-1	5.64A	505	49 5/8	33 3/4	74 1/4

\*: Height does not include 5" for casters.

†: Based on evaporating temperature of 23°F (-5°C) & condensing temperature of 131°F (55°C).

Specifications subject to change without notice.

Product dimensions are for general purposes and not absolute value. Product capacity ( ) is calculated based on standard industry figures. Slight variations may exist. If dimensions and capacity are critical, please contact Everest Refrigeration.

Ref = Refrigerator

(H) = Half Door



Please visit our website for updated Energy Efficiency information.