



EMGR33-SS



EMGR48-SS

Cabinet Construction

- Heavy duty stainless steel exterior. All stainless steel interior suited for storage of unpackaged goods. Detachable interior drain plug for ease of cleaning.
- Open spaced interior with no walls between compartments.
- Galvanized steel top, bottom and rear.
- 2.5" thick high density polyurethane insulation.
- Four height adjustable screw legs.

Refrigeration System

- Bottom mounted, self-contained and fully detachable Blizzard R290 condensing unit uses environmentally friendly, EPA-compliant R290 refrigerant with zero (0) Ozone Depletion Potential (ODP) and three (3) Global Warming Potential (GWP). Blizzard R290 is easily replaceable and requires no on-site brazing.
- Electronically commutated (ECM) fan motors achieve rapid cooling with less energy consumption.
- Full-length air duct ensures optimal cold air distribution.
- Air circulation guard keeps floor vents from obstruction.
- Time-initiated and temperature-terminated auto defrost cycle for seamless operation.
- Large capacity, corrosion-resistant condenser and evaporator coils.
- Self-maintaining, energy-efficient condensate drain pan requires no external drains or electric heaters.
- High performance, auto-reverse condenser fan motor supports compressor ventilation and condenser coil cleaning.
- Pre-wired and ready to plug, 115V/60Hz/1Ph, NEMA 5-15P.

Lighting

- Shielded LED bar lighting with on/off switch provides bright, high color illumination at lower heat output.

Doors

- Low emissivity double glass panes reflect UV rays for efficient cooling.
- Gray PVC frames.
- Self-closing with heavy duty door bumpers for impact absorption.
- Removable doors and door tracks for ease of cleaning.
- Pre-installed locks keep your items safe from theft.

Shelving

- Four epoxy coated, steel wire shelves with airflow guard per section.
- Height adjustable stainless steel clips.

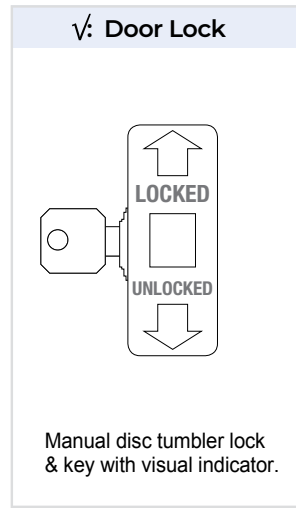
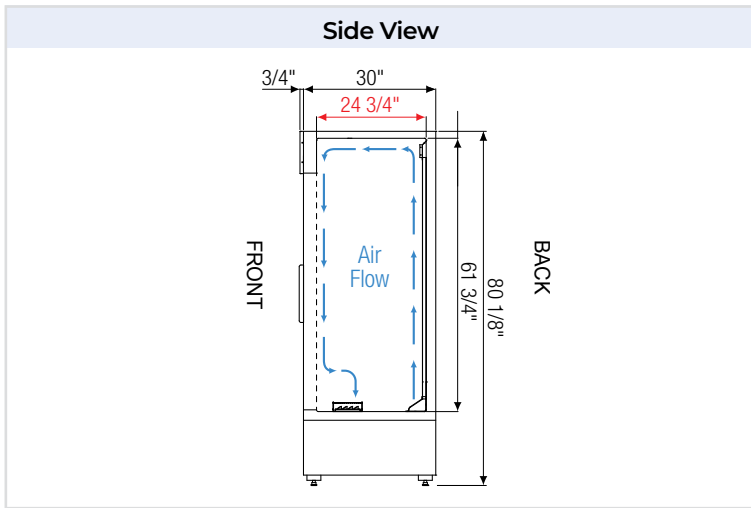
Temperature Control


- Multi-function digital controller with easy to read LED display.
- Factory preset temperature, 35°F. Temp-set range from 33°F to 54°F.
- Audible overheat protection alarm for compressor and condenser coil.

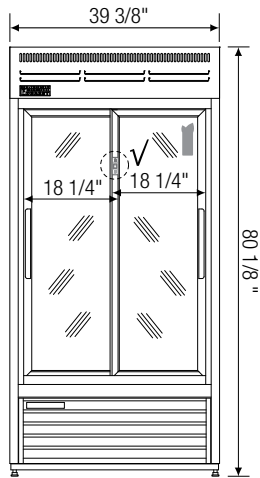
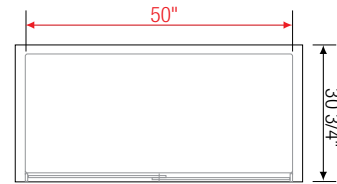
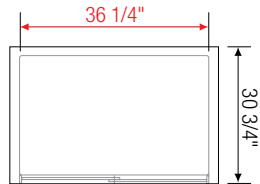
Options

- Additional shelving.
- 5" or 3" swivel casters with locks on front set.
- 3.5"-6" height-adjustable and interchangeable legs.

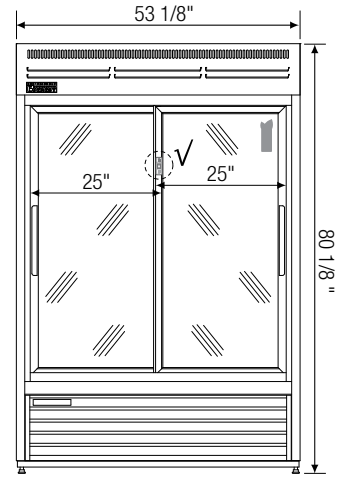
↔ = Interior Dimensions ↔ = Exterior Dimensions



 Equipped with 9 ft long NEMA 5-15P plug.



EMGR33-SS



EMGR48-SS

Model	Ref/ Frz/ Dual	# of Doors	Capacity (Cu. Ft.)	Capacity 20 oz. Bottles	HP	Refrigerant	# of Shelves	Power (V-Hz-Ph)	Amps	Crated Weight (LBS)	Exterior Dimensions (Inches)		
											L	D	H
EMGR33-SS	Ref	2 (sliding)	33	336	1/3	R290	8	115-60-1	2.5	416	39 3/8	30 3/4	80 1/8
EMGR48-SS	Ref	2 (sliding)	48	448	1/2	R290	8	115-60-1	5.5	533	53 1/8	30 3/4	80 1/8

Specifications subject to change without notice.

Ref = Refrigerator

Product dimensions are for general purposes and not absolute value. Product capacity (P) is calculated based on standard industry figures. Slight variations may exist. If dimensions and capacity are critical, please contact Everest Refrigeration.