

HORIZONTAL BOTTLE COOLERS

EBC - Series • EBC37 • EBC50 • EBC65 • EBC80 • EBC95



▲ EBC37



▲ EBC50



▲ EBC65



▲ EBC80



▲ EBC95

Cabinet Construction

- Heavy duty stainless steel countertop and rails with textured laminate, black vinyl exterior.
- Open spaced interior with no walls between compartments.
- Galvanized steel interior.
- 1 3/4" thick high density polyurethane insulation.
- Built-in caster thread receptacles for all models.

Refrigeration System

- Side mounted, self-contained and fully detachable Blizzard R290 condensing unit uses environmentally friendly, EPA-compliant R290 refrigerant with zero (0) Ozone Depletion Potential (ODP) and three (3) Global Warming Potential (GWP). Blizzard R290 is easily replaceable and requires no on-site brazing.
- Electronically commutated (ECM) fan motors achieve rapid cooling with less energy consumption.
- Full-length air duct system ensures optimal circulation of cold air.
- Time-initiated and temperature-terminated auto defrost cycle for seamless operation.
- Large capacity, corrosion-resistant condenser and evaporator coils.
- Self-maintaining, energy-efficient condensate drain pan requires no external drains or electric heaters.
- High performance, auto-reverse condenser fan motor supports compressor ventilation and condenser coil cleaning. Refer to owner's manual for full maintenance instructions.
- Pre-wired and ready to plug, 115V/60Hz/1Ph, NEMA 5-15P.

Lighting

- Shielded LED bar lighting with on/off switch provides bright, high color illumination at lower heat output.

Bottle Cap Opener

- Front mounted bottle cap opener and cap catcher are removable for ease of cleaning.

Lids

- Heavy duty stainless steel exterior and galvanized steel interior.
- 3/4" thick high density polyurethane insulation.
- Removable ratchet locks keep your items safe from theft.

Shelving

- Horizontal epoxy coated, steel wire shelves for bottom air circulation (see table for quantity).
- Vertical epoxy coated, steel wire bin dividers (see table for quantity).

Temperature Control

- Multi-function digital controller with easy to read LED display.
- Factory preset temperature, 35°F.
- Temperature setting range from 33°F to 54°F.
- Audible overheat protection alarm for compressor and condenser coil.

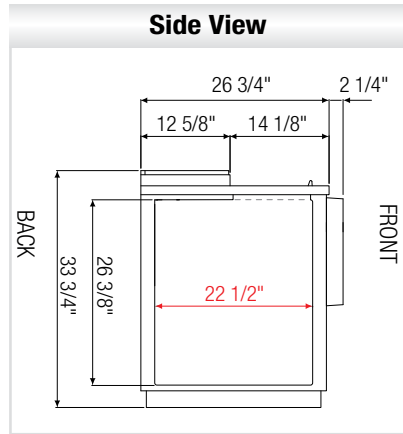
Options

- Additional bin dividers.
- 3" or 5" swivel casters with locks.
- 3.5" – 6" height-adjustable and interchangeable legs.

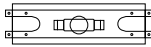


Dimensions

↔ = Interior Dimensions ↔ = Exterior Dimensions



√ : Drain

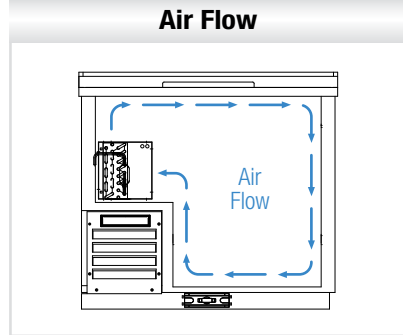
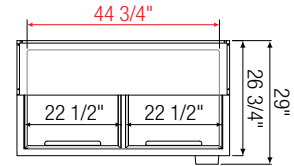
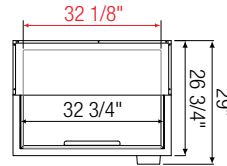


T-Shaped PVC Drain Fittings w/ Movable Plug.

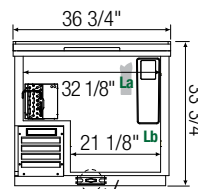
It is required to use a hose attachment w/ 3/4" inner diameter.



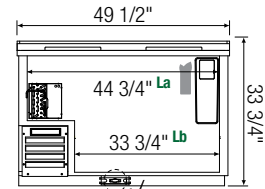
Lids come standard with ratchet locks.



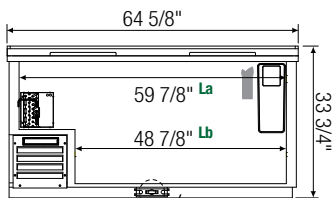
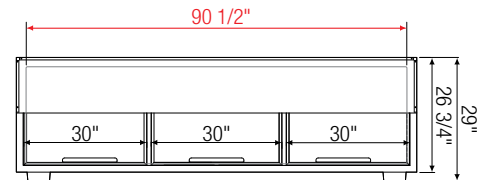
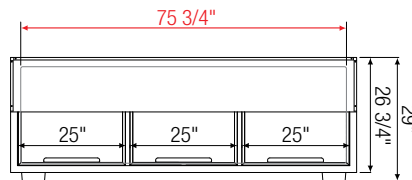
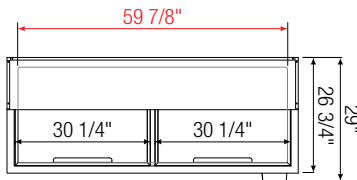
Equipped with 9 ft long NEMA 5-15P plug.



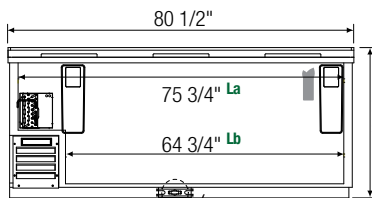
▲ EBC37



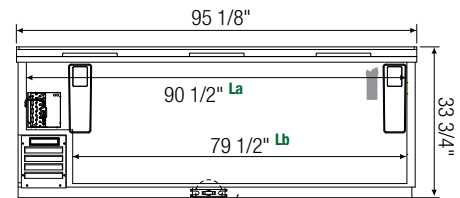
▲ EBC50



▲ EBC65



▲ EBC80



▲ EBC95

| Model | Ref/ Frz/ Dual | Capacity (Cu. Ft.) | # of Lids | HP | Refrigerant | # of Bin Dividers | Capacity | | # of Shelves | Power (V-Hz-Ph) | Amps | Crated Weight (LBS) | Exterior Dimensions (Inches) | | |
|-------|----------------|--------------------|-----------|------|-------------|-------------------|-------------|----------------|--------------|-----------------|------|---------------------|------------------------------|--------|--------|
| | | | | | | | 12 oz. Cans | 12 oz. Bottles | | | | | L | D* | H |
| EBC37 | Ref | 11 | 1 | 1/4+ | R-290 | 2 | 348 | 264 | 1 | 115-60-1 | 3.50 | 197 | 36 3/4 | 26 3/4 | 33 3/4 |
| EBC50 | Ref | 15 | 2 | 1/4+ | R-290 | 3 | 576 | 396 | 2 | 115-60-1 | 3.50 | 235 | 49 1/2 | 26 3/4 | 33 3/4 |
| EBC65 | Ref | 21 | 2 | 1/4+ | R-290 | 4 | 780 | 528 | 2 | 115-60-1 | 3.50 | 285 | 64 5/8 | 26 3/4 | 33 3/4 |
| EBC80 | Ref | 26 | 3 | 1/3 | R-290 | 5 | 1,008 | 720 | 3 | 115-60-1 | 2.50 | 386 | 80 1/2 | 26 3/4 | 33 3/4 |
| EBC95 | Ref | 31 | 3 | 1/3 | R-290 | 6 | 1,320 | 900 | 3 | 115-60-1 | 2.50 | 440 | 95 1/8 | 26 3/4 | 33 3/4 |

*: Depth does not include bottle cap opener with integrated receptacle.

Ref = Refrigerator

La, Lb : Interior Length

Specifications subject to change without notice.

Product dimensions are for general purposes and not absolute value. Product capacity (▲) is calculated based on standard industry figures. Slight variations may exist. If dimensions and capacity are critical, please contact Everest Refrigeration.



Please visit our website for updated Energy Efficiency information.