



EBB23

Cabinet Construction

- Heavy duty stainless steel countertop with textured laminate, black vinyl exterior. Stainless steel exterior for models EBB48-SS and EBB59-SS.
- Galvanized steel interior walls and high quality stainless steel floor.
- 1 3/4" thick high density polyurethane insulation.
- Four pre-installed 5" swivel casters with locks on front set (applies only to model EBB23).
- Built-in caster thread receptacles for all models.

Refrigeration System

- Side mounted, self-contained and fully detachable Blizzard R290 condensing unit uses environmentally friendly, EPA-compliant R290 refrigerant with zero (0) Ozone Depletion Potential (ODP) and three (3) Global Warming Potential (GWP). Blizzard R290 is easily replaceable and requires no on-site brazing (Blizzard R290 condensing unit is back mounted for model EBB23).
- Electronically commutated (ECM) fan motors achieve rapid cooling with less energy consumption.
- Full-length air duct ensures optimal cold air circulation.
- Time-initiated and temperature-terminated auto defrost cycle for seamless operation.
- Large capacity, corrosion-resistant condenser and evaporator coils.
- Self-maintaining, energy-efficient condensate drain pan requires no external drains or electric heaters.
- High performance, auto-reverse condenser fan motor supports compressor ventilation and condenser coil cleaning.
- Pre-wired and ready to plug, 115V/60Hz/1Ph, NEMA 5-15P.

Lighting

- Shielded LED bar lighting with on/off switch provides bright, high color illumination at lower heat output.

Doors

- Textured laminate, black vinyl exterior with galvanized steel interior. Stainless steel exterior and galvanized interior for models EBB48-SS and EBB59-SS.
- 1 3/4" thick high density polyurethane insulation.
- Snap-in magnetic gasket for ease of cleaning.
- High strength, recessed handles.
- Pre-installed locks keep your items safe from theft.

Shelving

- Two epoxy coated, steel wire shelves per section.
- Height adjustable stainless steel clips.

Temperature Control

- Multi-function digital controller with easy to read LED display.
- Factory preset temperature, 35°F. Temp-set range from 33°F to 54°F.
- Audible overheat protection alarm for compressor and condenser coil.

Options

- Additional shelving.
- 3" or 5" swivel casters with locks.
- 3.5"-6" height-adjustable and interchangeable legs.



EBB48



EBB48-SS



EBB59



EBB59-SS



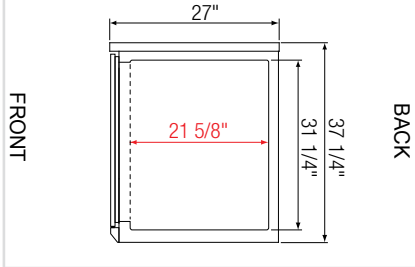
EBB69



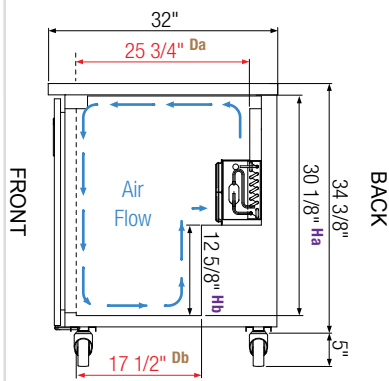
EBB90

↔ = Interior Dimensions ↔ = Exterior Dimensions

Side View (all models except EBB23)



Side View & Air Flow (EBB23)

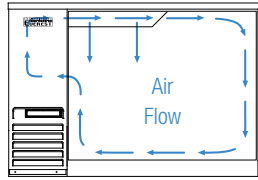


Pre-installed casters

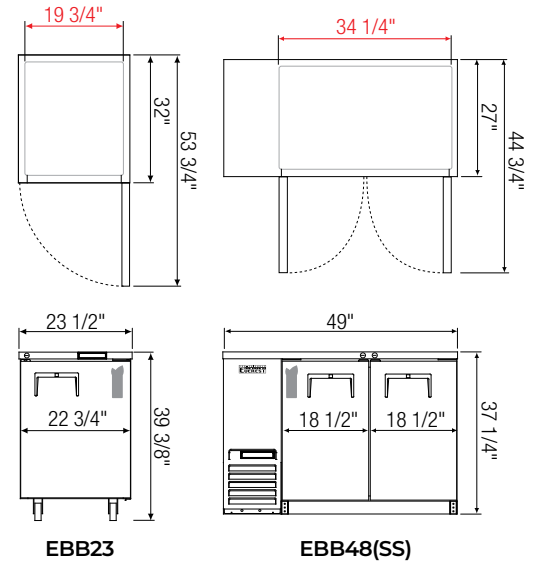


Equipped with 9 ft long NEMA 5-15P plug.

Air Flow (all models except EBB23)

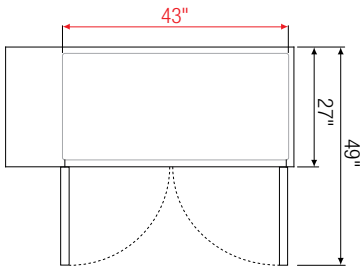


Front view of cabinet interior demonstrates air circulation from left to right.

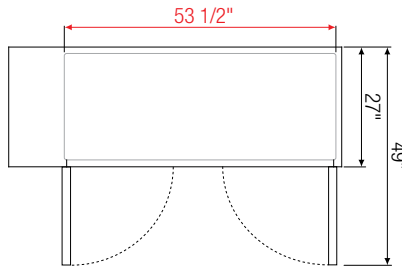


EBB23

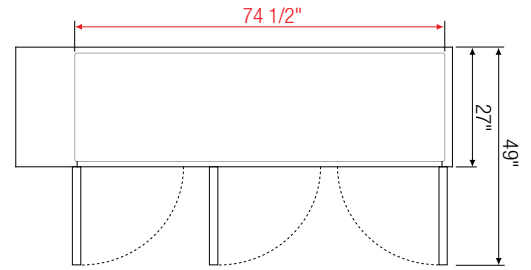
EBB48(SS)



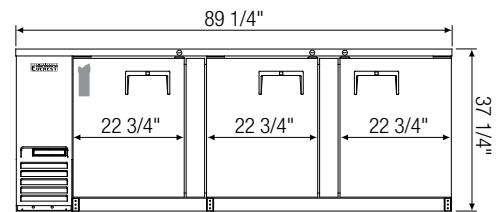
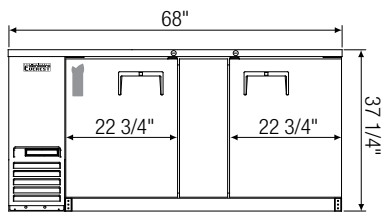
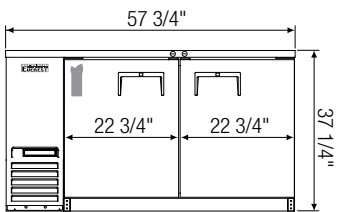
EBB59(SS)



EBB69



EBB90



Model	Ref/ Frz/ Dual	# of Doors	Capacity (Cu. Ft.)	Capacity		HP	BTU/HR †	Refrigerant	# of Shelves	Power (V-Hz-Ph)	Amps	Crated Weight (LBS)	Exterior Dimensions (Inches)		
				12 oz. Cans	12 oz. Bottles								L	D	H
EBB23	Ref	1	8	220	125	1/5	1,655	R290	2	115-60-1	2.5	167	23 1/2	32	39 3/8*
EBB48(SS)	Ref	2	14	490	344	1/4+	1,926	R290	4	115-60-1	3.5	269	49	27	37 1/4
EBB59(SS)	Ref	2	20	640	408	1/4+	1,926	R290	4	115-60-1	3.5	291	57 3/4	27	37 1/4
EBB69	Ref	2	24	800	504	1/4+	1,926	R290	4	115-60-1	3.5	323	68	27	37 1/4
EBB90	Ref	3	32	1120	696	1/3	2,311	R290	6	115-60-1	2.5	450	89 1/4	27	37 1/4

* Height includes 5" for casters.

† Based on evaporating temperature of 23°F (-5°C) & condensing temperature of 131°F (55°C).

Da, Db Interior Depth Ha, Hb Interior Height

Specifications subject to change without notice.

Product dimensions are for general purposes and not absolute value. Product capacity (†) is calculated based on standard industry figures. Slight variations may exist. If dimensions and capacity are critical, please contact Everest Refrigeration.

Ref = Refrigerator